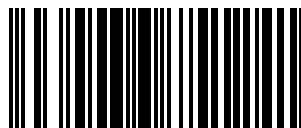




Kirami Sub heaters



WEIGHT:	20 kg
PRODUCT LENGTH:	66 cm
PRODUCT WIDTH:	30 cm
PRODUCT HEIGHT:	90 cm



6430036751241

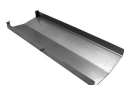
An internal submerged heater made out of marine aluminium is an ideal choice for hot tub heating. All Kirami hot tub heaters are manufactured in our own production facility out of high-quality AlMg3 marine aluminium, which boasts excellent thermal conductivity. Each and every one of our hot tub heaters is pressure tested before going on sale.

The hot tub is heated with a submerged Sub heater placed inside the tub; it is silver in colour and the door is decorated by a wooden handle. It is made out of high-quality marine-grade aluminium. 150mm chimney is suitable for this heater.

Product code: KS

Harvia code: KIR-48

Also get accessories



Ash shovel for Kirami's submerged heaters

SUB heater's air guideSub heater cover

Chimney set 150x2000mmm